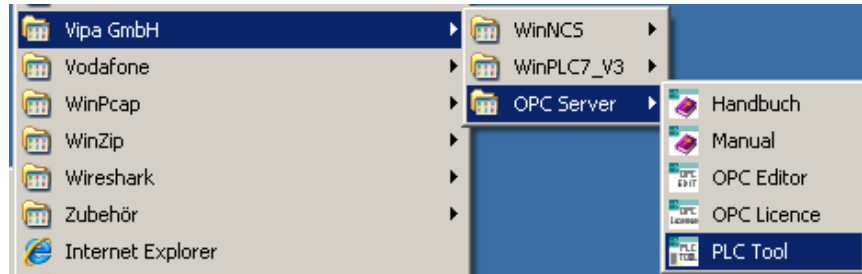


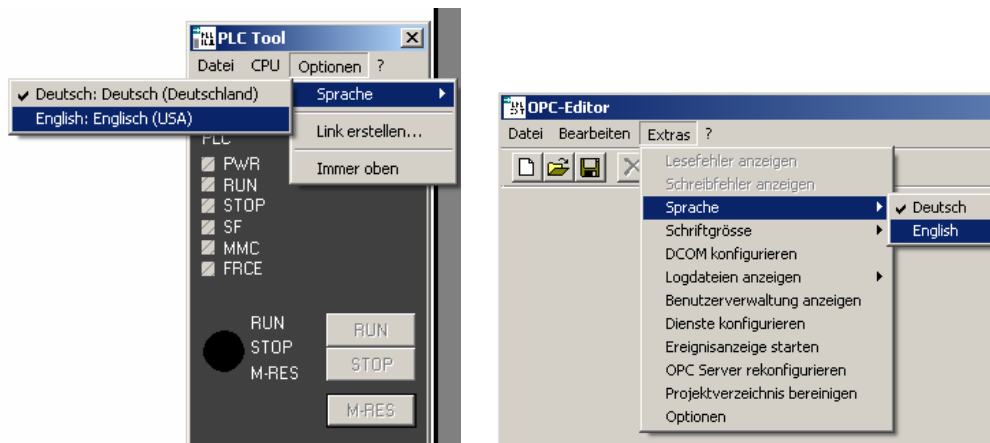
How to do

OPC-Server with MPI and ISO over TCP/IP Communication

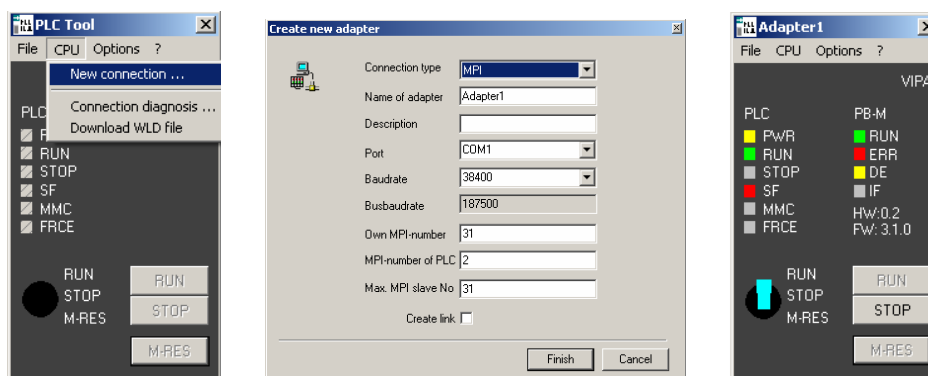
1. Connect your PC with an interface-cable RS232-MPI to the PLC.
2. All needed programs you can find in startmenu under:
Start=>programs=>VIPA_GmbH=>OPC_Server



3. To change the language of "PLC Tool" and "OPC-Editor" please look at following pictures.



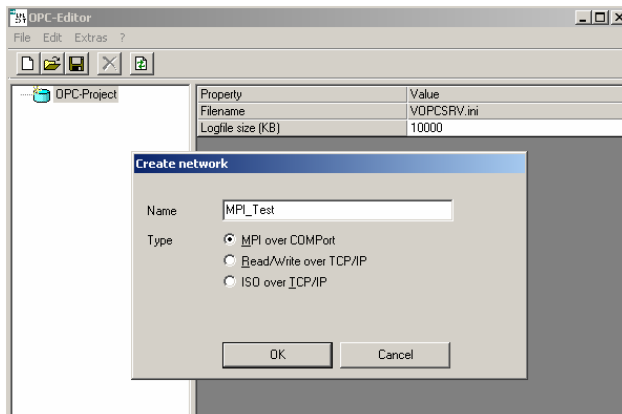
4. Start the program PLC-Tool to examine the connection to PLC. Choose in the menu „CPU“ => „New connection“. Put on a new adapter with Connection type „MPI“, your COM-Port, baudrate 38400 and MPI-Adress of your CPU. After clicking „Finish“, the tool connects with the PLC. As a minimum condition for the following steps the connection establishment must be OK.



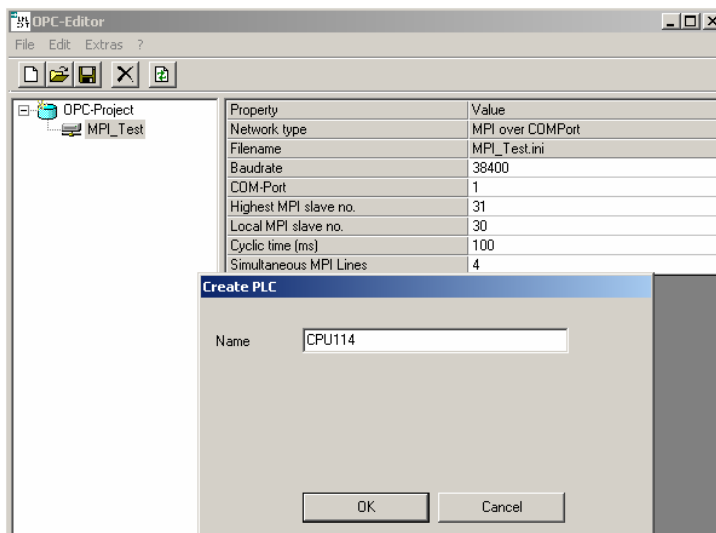
5. Terminate the PLC-Tool and start the OPC-Editor.

How to do

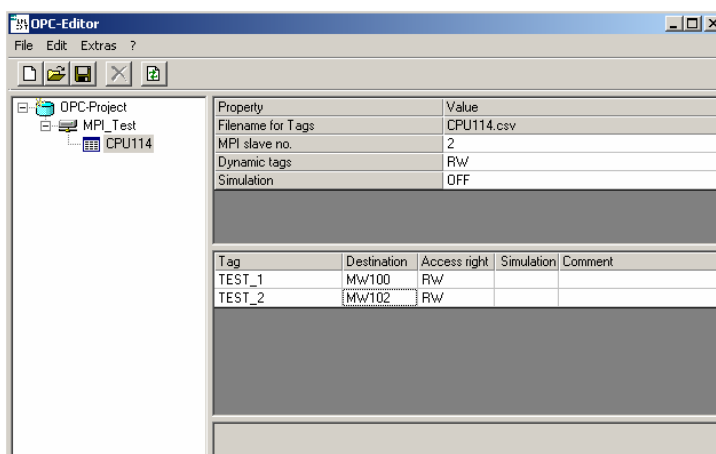
- Put on a new project with "File" => "New project".
Create a new MPI-Net with "Edit" => "Add network". (see picture)



- Select with the mouse the MPI-Network and edit the MPI-Parameters in the table at right side. (see below). Create with „Edit“ => „Add PLC“ a new PLC.



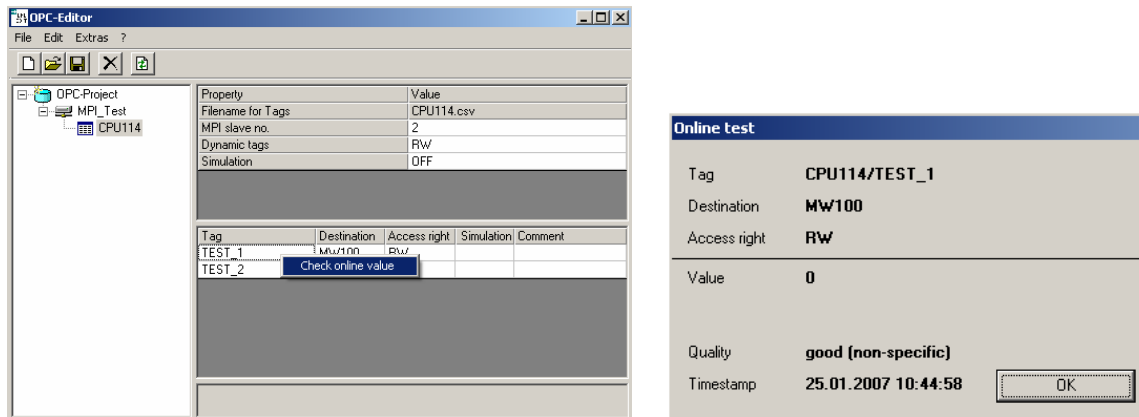
- Select the new PLC with the mouse and register your tags and the destination addresses in the table of the PLC. (see below)



- Important: Save your project in the VIPA-Installation-Directory:
Normally: C:\Program files\VIPA GmbH\OPC Server\ini\
10. Restart the OPC-Server with „Extras“ => „reconfigure OPC Server“

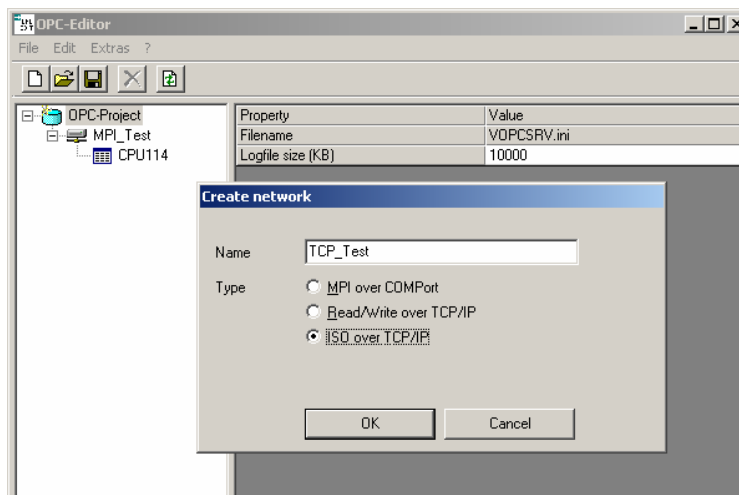
How to do

11. Choose „Check online value“, at rightclicking on a Tag, to read directly a value from the PLC.

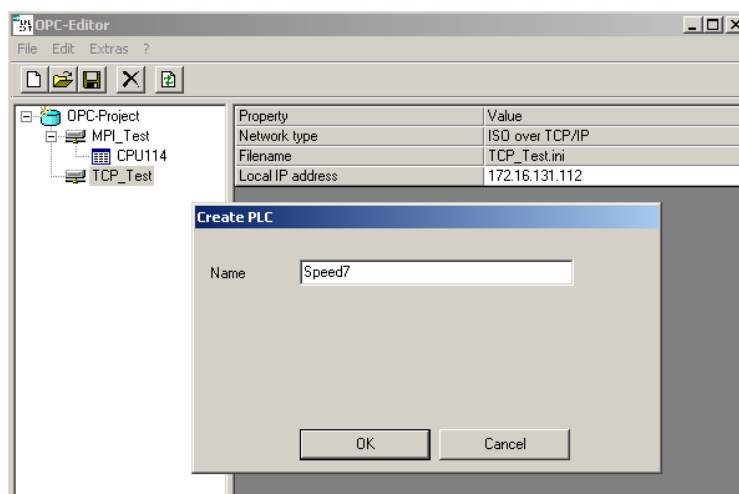


12. Connect your PC via Ethernet to the PLC.

Create a new ISO over TCP/IP Network with "Edit" => "Add network"

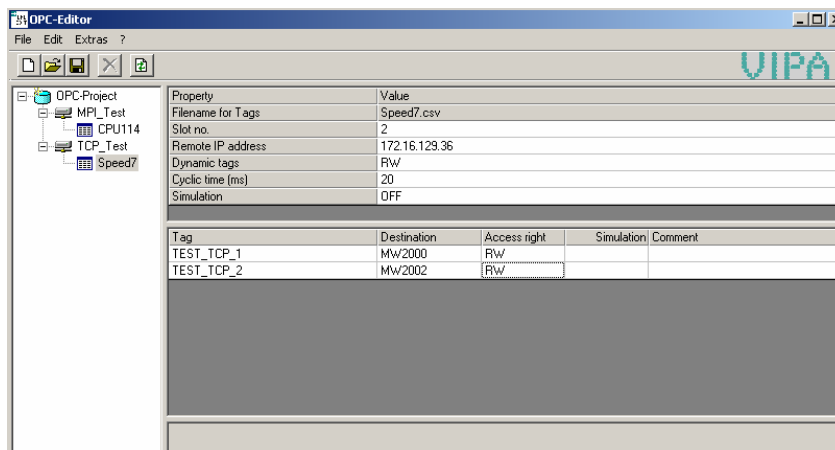


13. Select with the mouse the TCP-Network and edit your IP-Adress in the table at right side.
Create with „Edit“ => „Add PLC“ a new PLC



How to do

14. Select the new PLC and edit the IP-Adress of the PLC, the tags and the destinations to the PLC in the table. (see below)



15. Save your project.
16. Restart the OPC-Server with „Extras“ => „reconfigure OPC Server“.
17. Choose „Check online value“, at rightclicking on a Tag, to read directly a value from the PLC.

