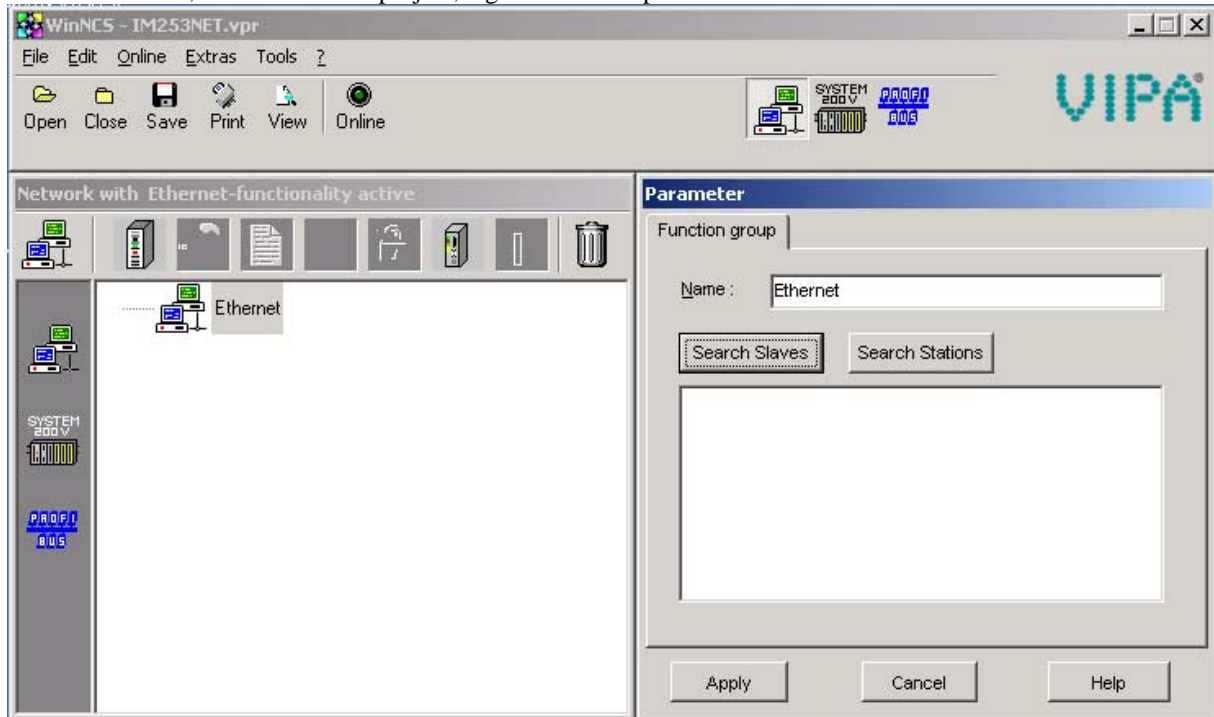
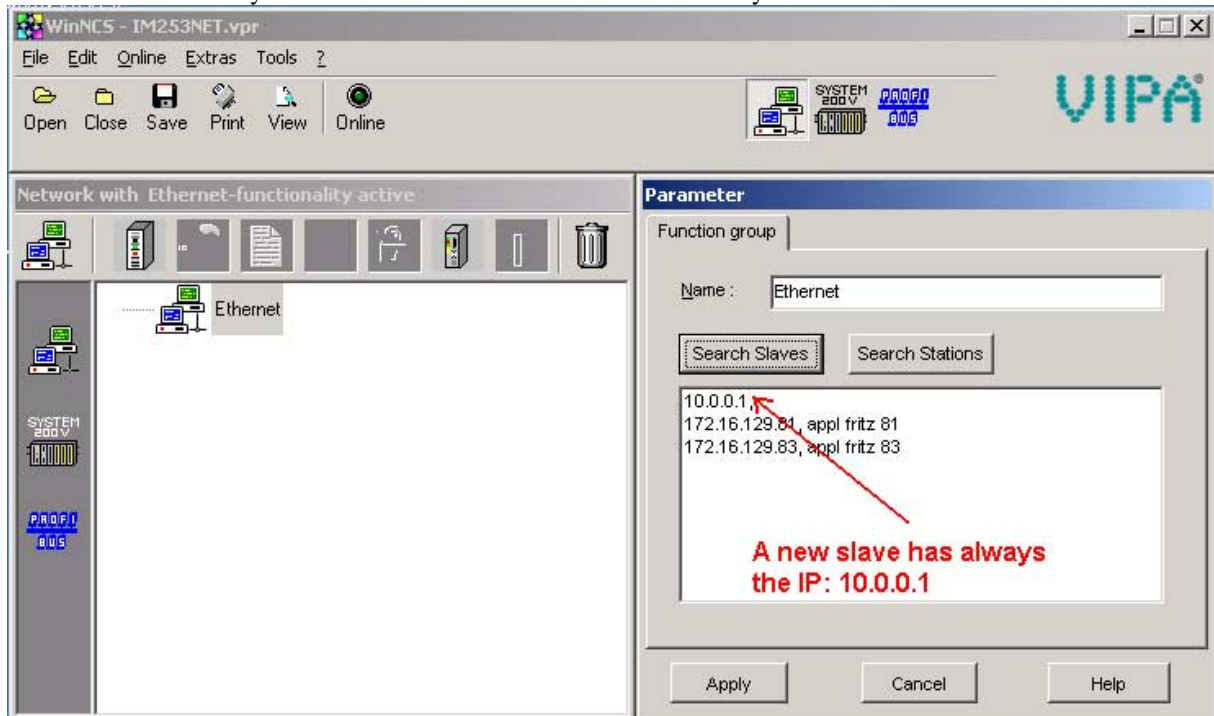


# How to do Setup a new IM253NET slave

1. You must install WinNCS Version 3.31 or higher.
2. Start WinNCS, create a TCP/IP project, e.g. IM253Net.vpr

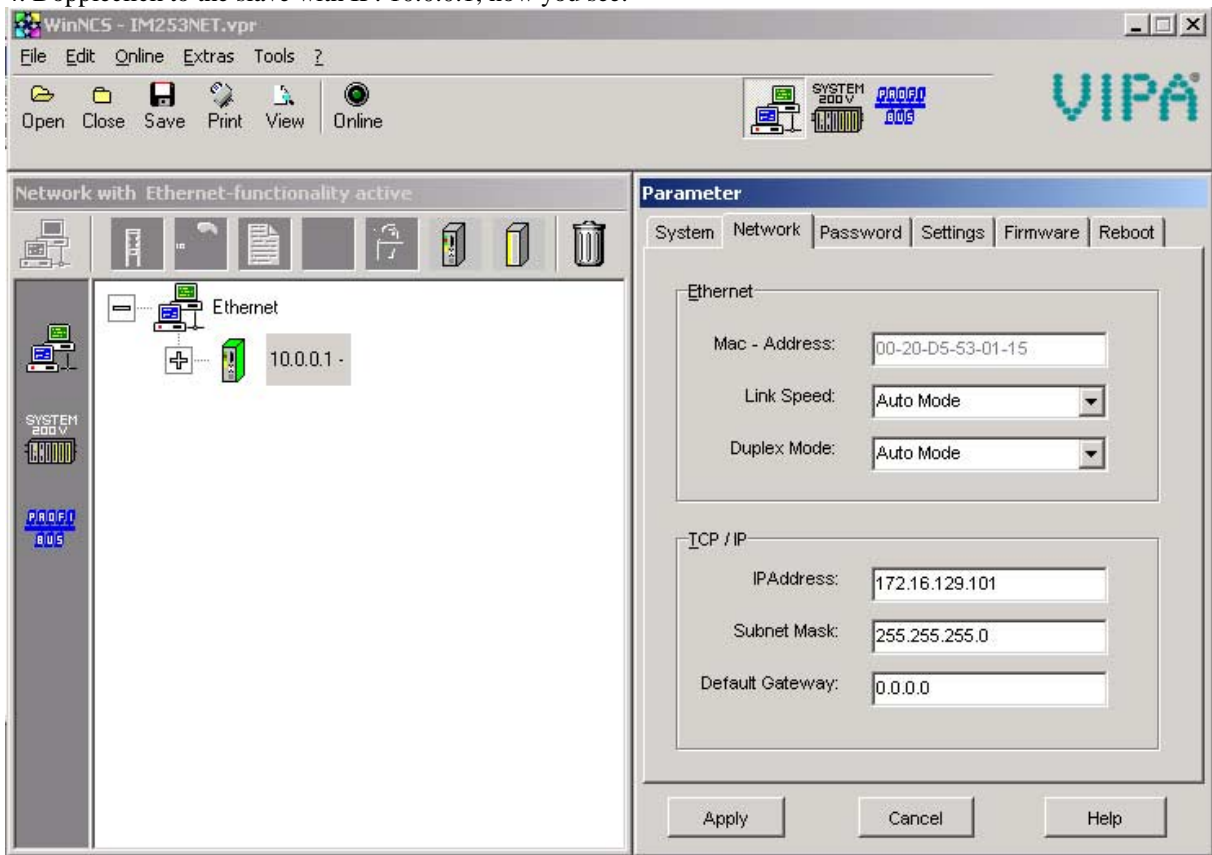


3. Connect one new slave into the Ethernet network, power it up.  
Press the button Search Slaves in the right window.  
After some seconds you can see all the VIPA IM253NET slaves in your network.



# How to do Setup a new IM253NET slave

4. Dopplick to the slave with IP: 10.0.0.1, now you see:



5. Select the tap Network, set your needed IP-address and the Netmask, e.g. 172.16.129.101, 255.255.255.0  
At the tap System, you can set a station name.  
Than press the Apply button, now WinNCS asks for a password, give the password: 00000000 (8x 0).  
Now the new settings will be made.

6. Now you can search again the stations, after some seconds you will see your station with your settings.

